

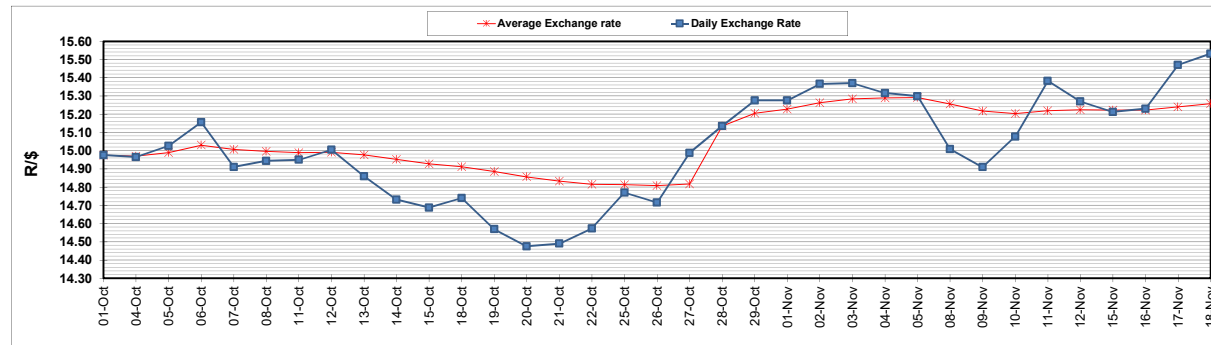
	PETROL 95 ULP	PETROL 93 ULP & LRP	DIESEL 0.05%	DIESEL 0.005%	ILL. PAR.
GAUTENG PUMP PRICE (SA c/l) AS FROM 03/11/2021	1,954.000	1,932.000	-	-	-
WHOLESALE PRICE (SA c/l) AS FROM 03/11/2021	-	-	1,719.980	1,723.380	1,125.488
SINGLE NATIONAL MAXIMUM RETAIL PRICE	-	-	-	-	1,433.000
BASIC FUEL PRICE - 18/11/2021 (SA c/l)	920.640	906.456	909.151	915.069	896.874
PRESS RELEASE CONTRIBUTION TO BFP 03/11/2021 - 18/11/2021 (SA c/l)	937.110	925.110	917.630	921.030	912.128
UNIT OVER/(UNDER) RECOVERY - 18/11/2021 (SA c/l)	16.470	18.654	8.479	5.961	15.254
AVERAGE BASIC FUEL PRICE 28/10/2021 - 18/11/2021	957.236	937.764	927.897	933.702	918.933
AVERAGE UNIT OVER/(UNDER) RECOVERY 28/10/2021 - 18/11/2021	(49.826)	(42.355)	(46.767)	(49.171)	(43.055)

ANALYSIS MOVEMENT OF AVERAGE OVER/(UNDER) RECOVERY

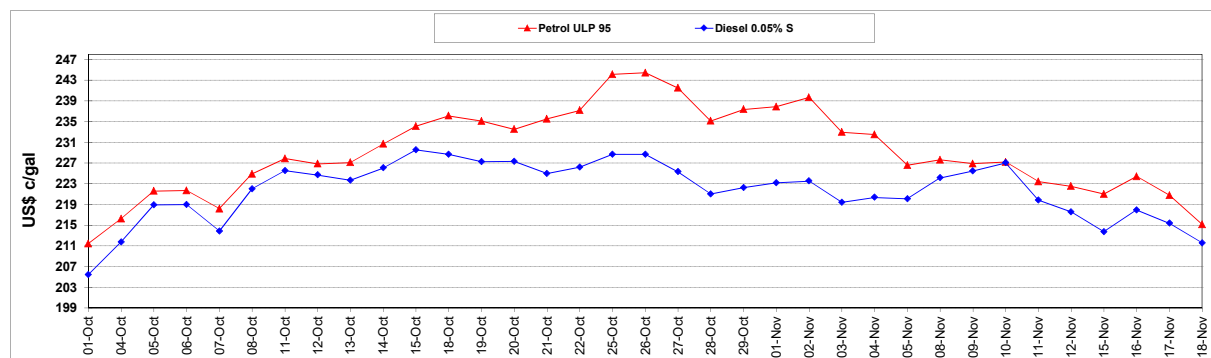
	PETROL 95	PETROL 93	DIESEL 0.05%	DIESEL 0.005%	ILL. PAR.
- MOVEMENT IN INTERNATIONAL PRODUCT PRICES	(22.172)	(15.263)	(19.961)	(22.198)	(16.508)
- MOVEMENT IN EXCHANGE RATE	(27.654)	(27.091)	(26.806)	(26.974)	(26.547)
AVERAGE UNIT OVER/(UNDER) RECOVERY 28/10/2021 - 18/11/2021	(49.826)	(42.355)	(46.767)	(49.171)	(43.055)

R/\$ EXCHANGE RATE - (R/\$15.5325 - 18/11/2021)

EXCHANGE RATE USED IN BASIC FUEL PRICE



INTERNATIONAL PRODUCT PRICES OF BASKET USED IN BASIC FUEL PRICE



BASIC FUEL PRICE IN SA CENTS PER LITRE

